



# MONTHLY MEMBERSHIP PROGRESS REPORT

District 321C1

Results as of: 5/31/2015

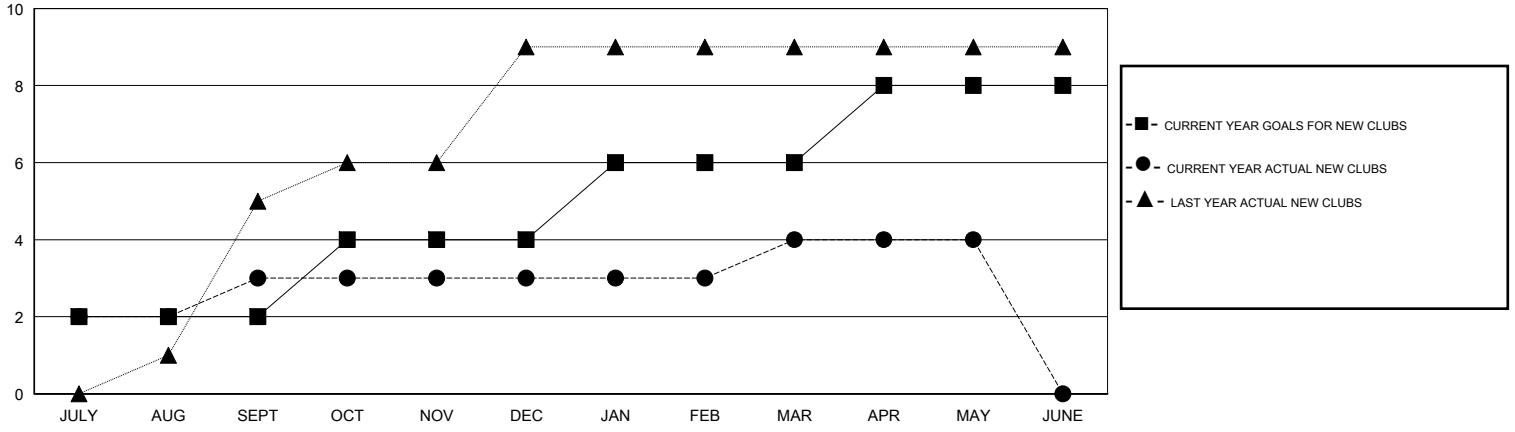
GMT: V S Kukreja

LOCATION INDIA

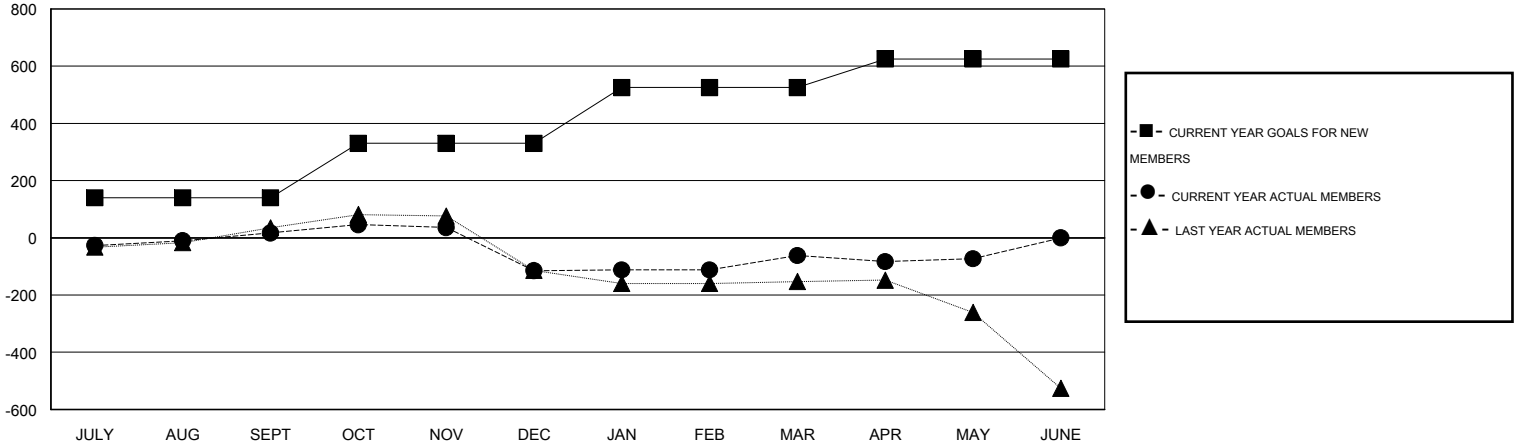
GMT CA 6

Clubs					Members				
RESULTS FOR 2014-2015					RESULTS FOR 2014-2015				
QUARTER	NEW CLUB GOAL	NEW CLUBS	DROPPED CLUBS	NET GAIN/LOSS	QUARTER	NEW MEMBER GOAL	CHARTER AND NEW MEMBERS ADDED	DROPPED MEMBERS	NET GAIN/LOSS
JULY/AUG/SEPT	2	3	0	3	JULY/AUG/SEPT	140	157	140	17
OCT/NOV/DEC	2	0	6	-6	OCT/NOV/DEC	190	81	213	-132
JAN/FEB/MAR	2	1	3	-2	JAN/FEB/MAR	195	173	120	53
APR/MAY/JUNE	2	0	0	0	APR/MAY/JUNE	100	63	74	-11

GOALS AND ACTUAL NEW CLUBS CUMULATIVE



GOALS AND ACTUAL MEMBERS CUMULATIVE



DROPPED CLUBS: 9	62 CLUBS OF 141 ADDED 1 OR MORE NEW MEMBERS	<u>GENDER DISTRIBUTION</u>	
<u>DROPPED MEMBERS</u>		MALE	3,235 (79.62%)
DECEASED	10	FEMALE	828 (20.38%)
CLUB CANCELLED	189	<u>FAMILY UNIT MEMBERS</u> 1,442	
OTHER	348	<u>HEAD OF HOUSEHOLD</u> 686	
<b>TOTAL</b>	<b>547</b>	<u>NON-HEAD OF HOUSEHOLD</u> 756	

[CLICK HERE FOR HEALTH ASSESSMENT DATA](#)